

VEZZA-ULTRA | USER MANUAL



This user manual contains:

- | | |
|------------------------------------|--|
| 1. Installing Quick Release..... | 4. Calibrating the clutches..... |
| 2. Customising your layout..... | 5. Setting up the wheel in simhub..... |
| 3. Installing the wheel to PC..... | 6. Have fun!..... |

1. Installing your Quick Release or Adapter

This steering wheels has a 70mm bolt pattern spacer/adapter. Most of the Quick Releases have the same standard 70mm bolt pattern.

The package is provided with a set of bolts and tools, mount your QR to the backside of the wheel. If you have the steering wheel without any spacer/adapter, you can mount your QR to the 3 threaded M5 holes on the back of the steering wheel's housing



1. Installing your Quick Release or Adapter

Use the 6 outer holes to mount your quick release, check below.



1. Installing your Quick Release or Adapter

If you have not ordered the 'Standard' or SA40 Spacer/Adapter, you can mount your QR directly to the 3 M5 Threaded holes on the back of the housing.

Make sure to not destroy the threaded hole, when the bolt is tight, do NOT screw any further. Use the proper length bolt to not cause any damages.

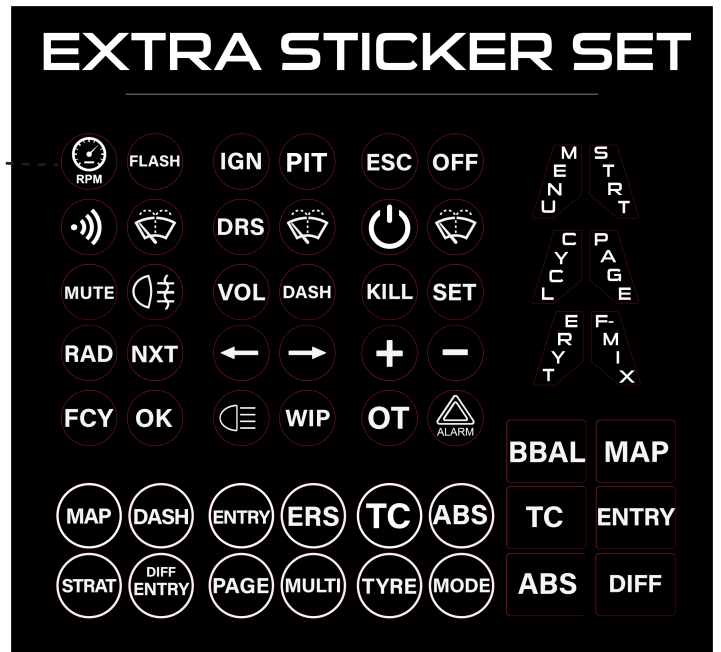


2. Customising your layout

The wheel is provided with the standard stickers already on them. There is also an extra sticker sheet added with the wheel to customise your own labels.

Apply your stickers with the provided tweezer to create your own unique layout!

If you have request for more or other custom stickers, feel free to contact us.



3. Installing the wheel to your computer

The wheel comes with an high quality Coiled USB Cable. First install the GX12 Connector to the back of the wheel. Align the notch and screw it on tightly.

All buttons and rotary encoders are Plug & Play.



4. Calibrating the clutches

Calibrating the Clutches

For an easy way to calibrate 1 or 2 clutches as a separate analog-output; we recommend doing this in DIView

Download here: <https://heusinkveld.com/download-diview/>

User Manual can be found on this website as well

Calibrating the Clutches | Dual mode or Bitepoint

If you have 2 Clutches on the wheel you can set them to Dual mode with a bite point.

You can also have the clutches outputting the same value as 1

Analog output.

Download Freejoy here: <https://bit.ly/48G9fvk>

IMPORTANT: ALWAYS press 'Read config from Device' first after startup of software

The screenshot shows the FreeJoy Configurator v1.7.1b5 interface. On the left, the 'Device' section is set to 'VEZZA-ULTRA' with 'Device firmware v1.7.1b3' checked. A blue arrow points to the 'Read config from Device' button. The main window has tabs for 'Pin Config', 'Button Config', 'Axis Config', 'Axis Curves', 'Shift Registers', 'Encoders', 'LED/PWM', and 'Advanced Settings'. A blue arrow points to the 'Axis Config' tab. Below the main window, a detailed view of the 'Slider 2' configuration is shown, including 'Output' settings, 'Buttons from axes', and 'Calibrate' options.

With the wheel plugged into the pc

1. Click on "Read config from device"
2. Go to the tab "Axis config"

The Analog output is Either A0, A1 or both, depending on your Clutch configuration

3. Check the value of the clutch in normal position and pull the clutch completely to see the max value.

Fill in the value's in the Calibration tab



Dual Clutch Mode | Bite point

Device: UNIFLEX-ELITE2
Firmware: v1.7.1b3 ✓

Buttons from axes: 0

Slider 1:
Output: Output, Raw: -20541
Function: Plus
Function axis: Slider 2
Buttons: 0 Down, 0 Reset, 0 Up
Step div: 50, Prescaler %: 60

Slider 2:
Output: Output, Raw: -7482
Function: None
Function axis: X
Buttons: 0 Down, 0 Reset, 0 Up
Step div: 50, Prescaler %: 100

Annotations:
- plus: the second clutch applies the rest of the clutch value in bite-point mode (points to Slider 1 Function axis)
- put the function axis to the side of the bite point (points to Slider 2 Function axis)
- (bitepoint) (points to Slider 1 Prescaler %)

Finally; Click on “Write config to device” to save all settings, you can also do this while setting up the clutches to check if the values are set to your liking

We recommend to add around 100-200 more/less value so that the begin and endpoint are not pulsing.

If the bar is not very stable, you can add more or less filter, we recommend using max 4.

We are available to have direct support on Teamviewer to help with installation
If you have any questions regarding installation or any other questions don't hesitate to contact us via our website or info below.

E-Mail: info@zenssimwheels.com
Discord: <https://discord.com/invite/3m7FkP97td>

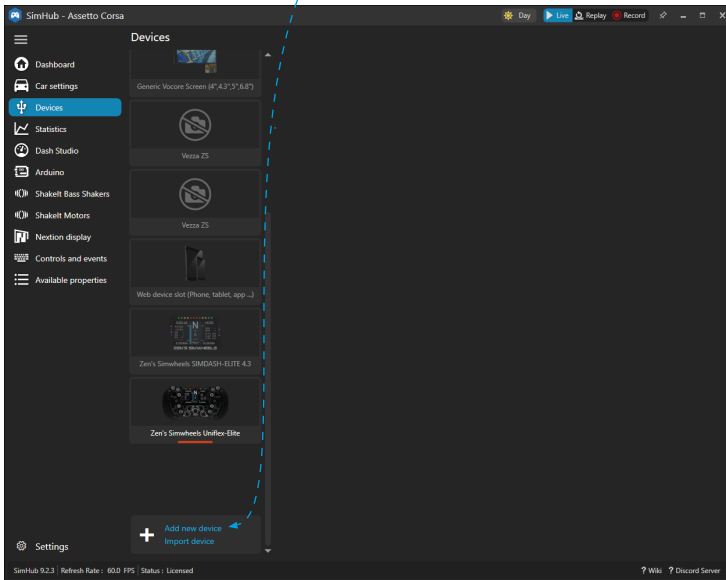
5. Setting up the wheel in Simhub



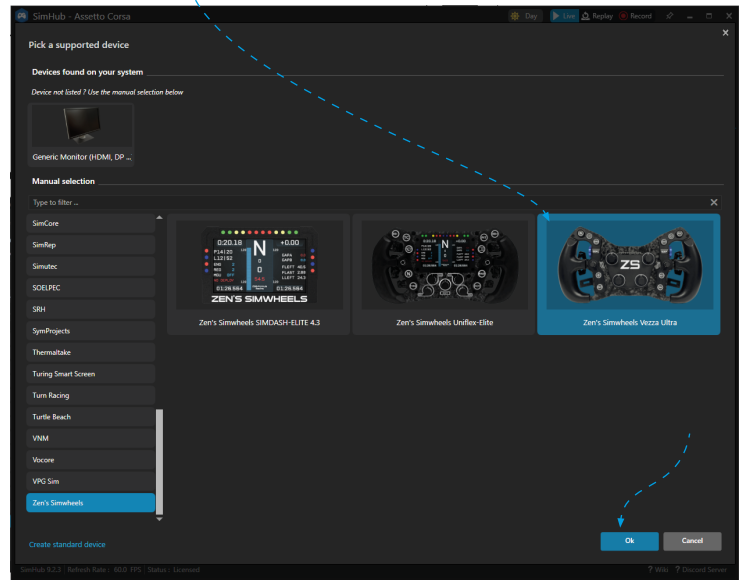
5. Setting up the wheel in Simhub

Install and open the latest version of Simhub (Version 9.1.28 minimum)
<https://www.simhubdash.com/download-2/>

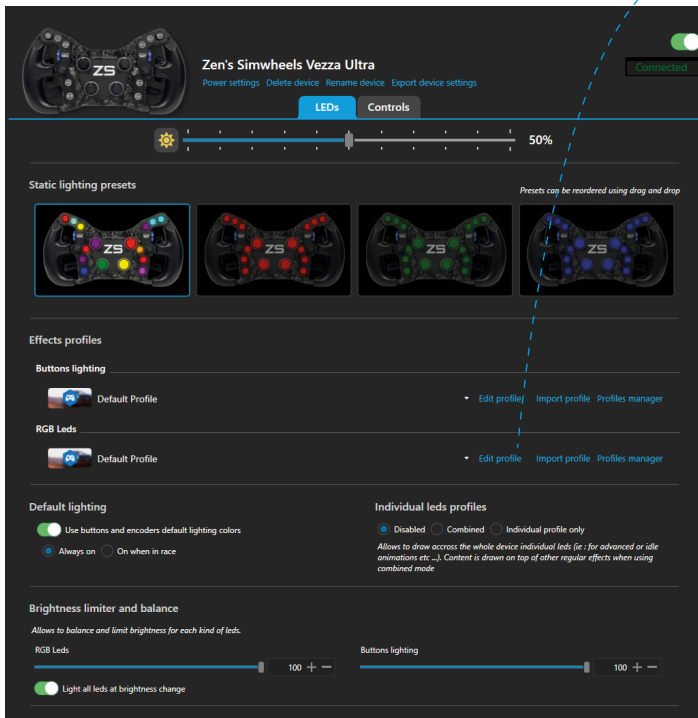
Go to devices and click “Add new device”



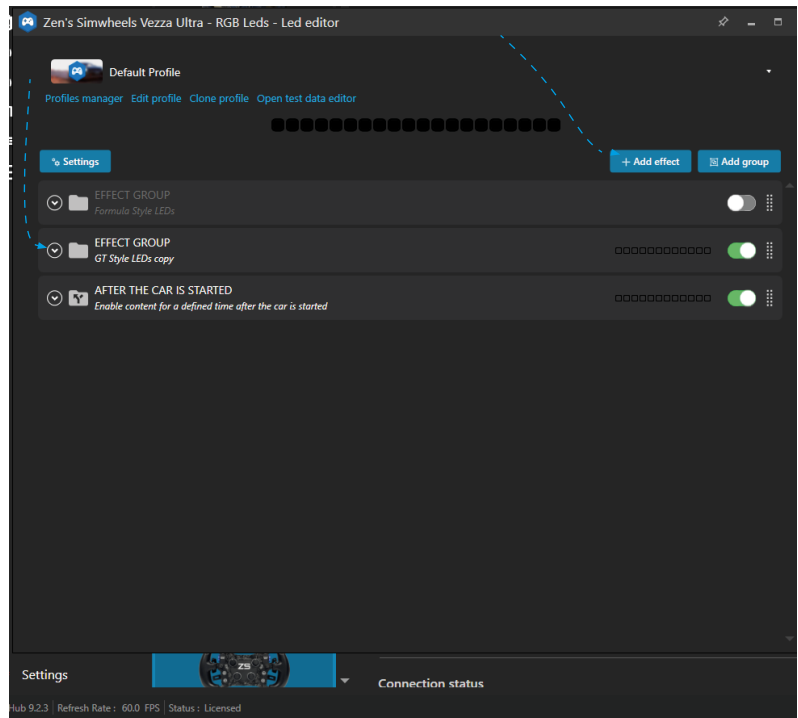
Select the steering wheel and press OK



Here you can change the brightness, edit the button colors and many more



We have pre-configured the main effects, but you can add and change them to your liking.



6. Have fun!

We hope the installation of these steps was successfully done and we wish you a lot of fun with your new steering wheel!

If you have any questions or need help with the installation, don't hesitate to contact us any time.

We are able to help from distance through Teamviewer or Discord.

Contact information:

E-Mail: info@zenssimwheels.com

Discord: Zen Metternich#2446

Discord server: <https://discord.gg/3m7FkP97td>

Phone: (+31) 6 40493394

